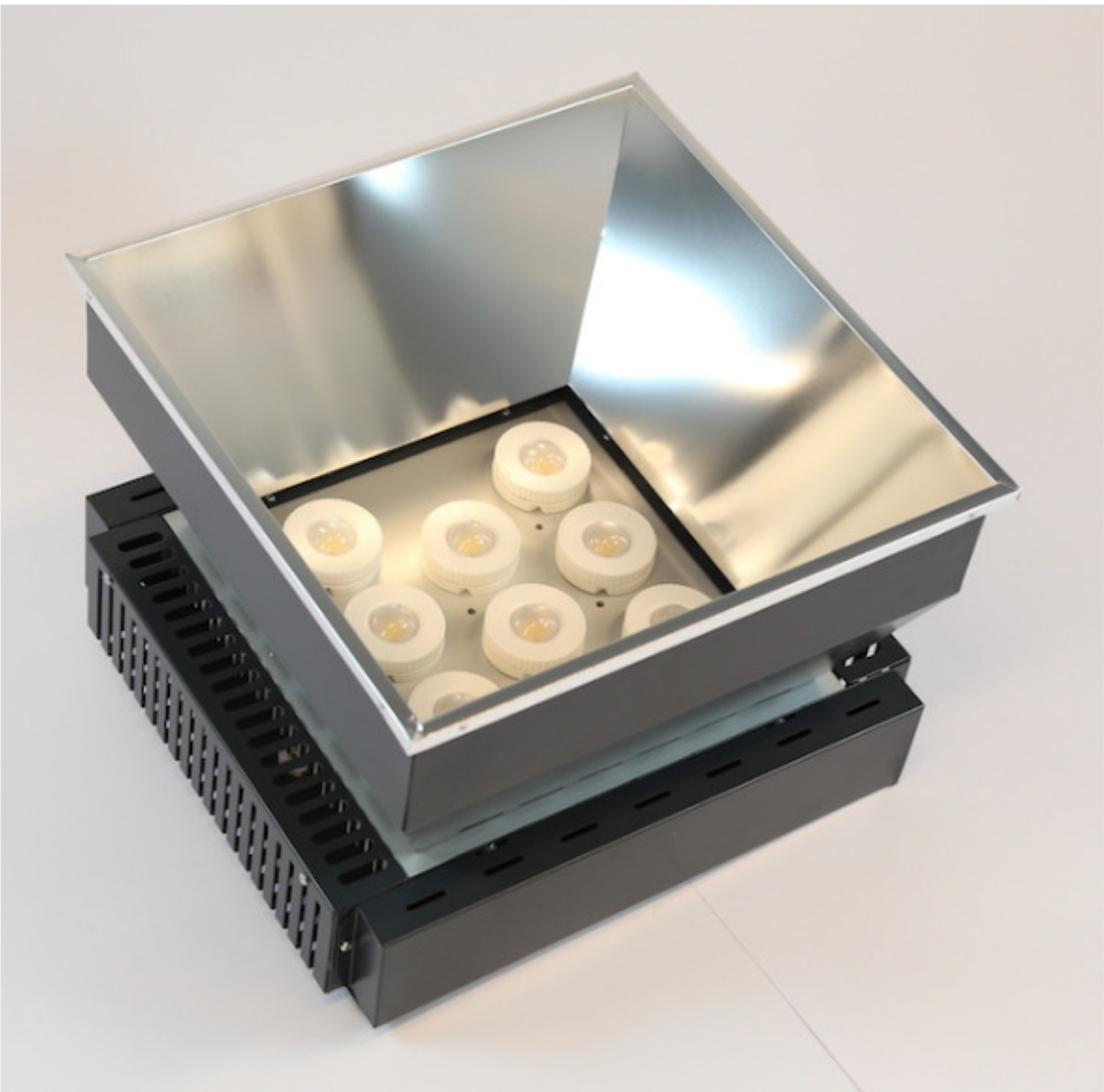


- Sensing (input)
- Signal processing
- Safety management
- Switching (output)



EFO 2I UD 008 -1o

Efora UD LAMP | DOWNLIGHT | SUSPENDED

SELV equiv. constant CURRENT compliance RoHS compliance CE

Luminaire type	Ceiling suspended	Gripple suspension kit (2M)
Maintenance category	B	
Body material	Stainless steel with lateral air vents, suspension closed hooks	Self-ventilation
Body finish	Anthracite	RAL7016
Optics	High efficiency matt aluminium reflector	
Control Gear	SELV equiv. constant current LED driver	Fixed output / DALI
Beam angle	90°	
Electrical connection	Male & female IP65 pluggable fast connector	STUCCHI
Electrical protection	Class I	
Ingress protection	IP20	IP65 lamp-holder
Impact resistance	IK07	Tempered glass
Glow wire flammability	850 °C	IEC 60695-2-12
Lamp type	Efora UD46 series	G46d exchangeability standard
Electrical safety	SELV equiv.	< 60VDC
Controllability	1% ~ 100%	I-10V / DALI dimmable
Ignition time	< 0.1 second	Instantaneous
Switching cycles	Unlimited	No impact on lifetime



## I. MAXIMUM RATINGS

Operating temperature	-30 °C ~ +40 °C	
Storage temperature	-40 °C ~ +80 °C	
Lamp rated Tc temperature	+85 °C	See lamp specification
Lamp permissible forward voltage	60VDC	See lamp specification
Lamp permissible constant current	700mA	See lamp specification
LED Driver rated Tc temperature	+80 °C	See LED Driver specification

## 2. OPTICAL CHARACTERISTICS

Colour code	4000K / 5000K	
Colour rendering index	83	Typical
Lamp Initial flux	8x2000lm / 8x3000lm	16,000lm / 24,000lm
Luminaire optical efficiency	97%	LOR

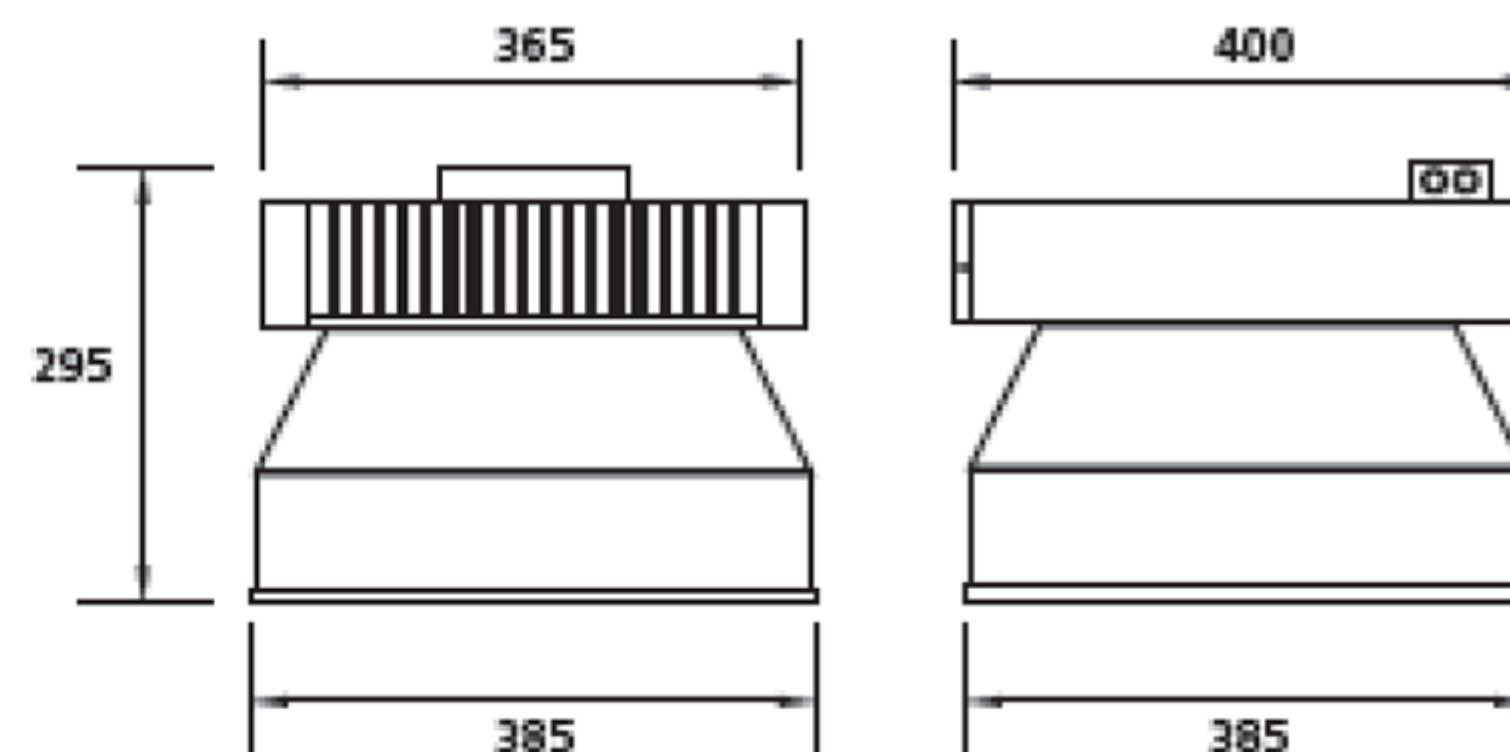
Note: luminous Flux tolerance +/-10%

## 3. ELECTRICAL CHARACTERISTICS

System power	215W	Including converter power loss
Lamp power	8x25W	Efora UD46-30-840-120

Note: wattage tolerance +/-5%

## 4. DIMENSIONS



Dimensions	400x400mm	Edge to edge
Height	295mm	
Weight	10Kg	Excluding lamp

## 5. INSTRUCTIONS

Please see instruction manual

## 6. PRECAUTIONS

- . Store in its original packing until final installation
- . Maintain in its original carton box within storage temperature between -40 °C and +85 °C
- . Handle with care during on-site installation in accordance with supplier's mounting instructions
- . Switch off main power supply when mounting the lamps in the luminaire on-site
- . Make sure the electrically active part of the lamp is connected to the wired cap in the luminaire
- . Do not exceed maximum ratings
- . Failure to conform to above listed norms, instructions and precautions will render the warranty null & void
- . The warranty is void if the product is not used for the purpose for which it is designed
- . Glass breakage during installation, use and maintenance is not covered by warranty
- . Lamps should be disposed according to national disposal & recycling regulations



## 7. UD Efora LAMP



UD Efora is not a retrofit bulb but an innovative exchangeable lamp delivering excellent energy efficiency and unsurpassed light quality. The clear or frosted lens or dichroic glass reflector have a unique diffused surface ensuring minimal glare and a comfortable aspect.. Efora LEDT5 lamps adopt the global G46d standard for connectivity.

## 8. REFERENCES

Art. Nr. : EFO 2I UD 008 -1o

Suspended downlight high-bay 400x400 Anthracite open type MIRO5 reflector male+female pluggable IP65 conector stucchi Non dimmable

Art. Nr.: EFO 2I UD 008 - 1s

Suspended downlight high-bay 400x400 Anthracite semi-opal diffuser MIRO5 reflector male+female pluggable IP65 conector stucchi Non dimmable

Art. Nr.: EFO 2I UD 008 -2o

Suspended downlight high-bay 400x400 Anthracite open type MIRO5 reflector male+female pluggable IP65 conector stucchi DALI dimmable

Art. Nr.: EFO 2I UD 008 -2s

Suspended downlight high-bay 400x400 Anthracite semi-opal diffuser MIRO5 reflector male+female pluggable IP65 conector stucchi DALI dimmable



